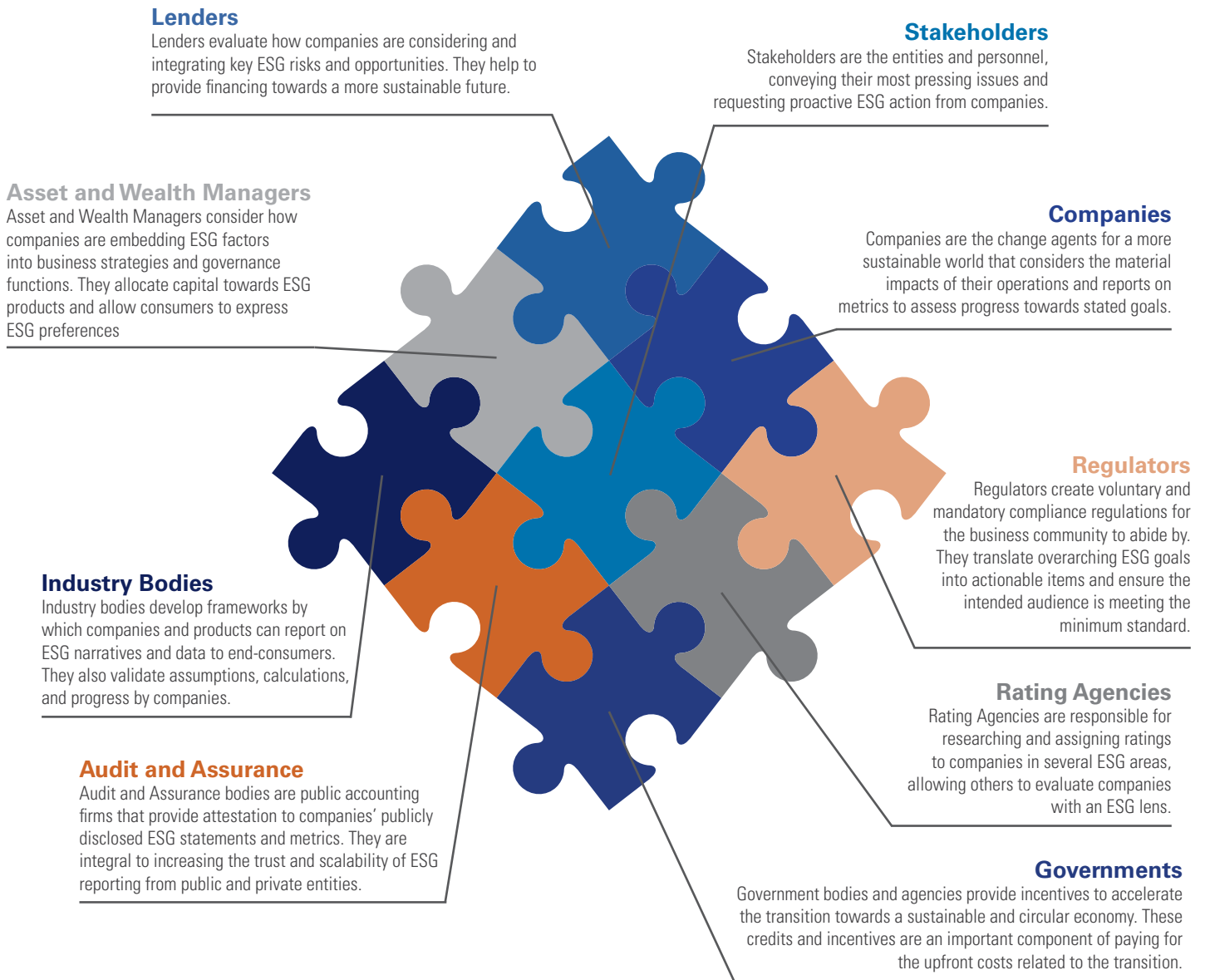


# PUTTING THE ESG PUZZLE TOGETHER

ESG is a stakeholder-centric approach to the consideration of environmental, social and governance factors. These factors represent risks and opportunities to an entity's business strategy, governance, and control framework. More frequently than ever before, the examination of these factors is used by a host of market participants in financial analysis, investment decisions, and lending processes.

So, who are the key participants in the puzzle, how do they fit together and why do they matter?



## ABOUT SCHNEIDER DOWNS ESG CONSULTING

With our industry expertise and extensive knowledge of the risk advisory landscape, the Schneider Downs team can help your organization prepare for the proposed disclosure requirements and additional ESG-related risks by developing an ESG strategy that aligns with your overall corporate strategy.

Learn more about our ESG consulting services at [www.schneiderdowns.com/esg](http://www.schneiderdowns.com/esg) or contact the team at [contactsd@schneiderdowns.com](mailto:contactsd@schneiderdowns.com).